



IXL School Analytics

Make confident decisions for your school with IXL School Analytics! IXL's school-level reports help you surface meaningful insights and answer key questions about student achievement. With robust filtering and grouping capabilities, you can easily manipulate your data to zero in on what matters most to you and accelerate student learning at your school.



IXL School Analytics gives you the answers you need:

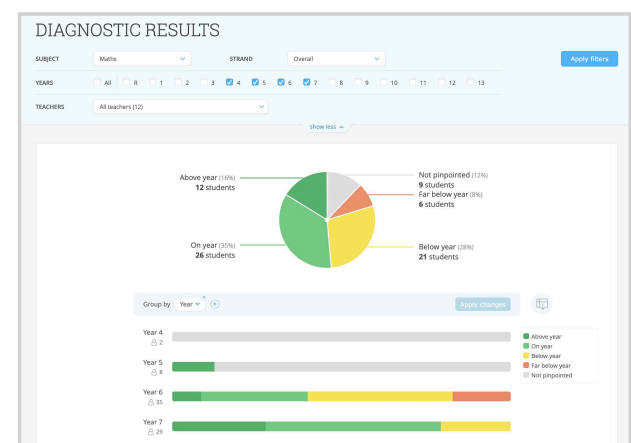
School-level reports:	Answer these questions:
<ul style="list-style-type: none">• Diagnostic Results• Diagnostic Tier Analysis• Diagnostic Strands• Snapshot Growth	Are our students meeting their year expectations?
<ul style="list-style-type: none">• Universal Assessments & Quiz Resource Results• Universal Assessments & Quiz Resource Item Analysis	How are our students performing on administrator-authored assessments?
<ul style="list-style-type: none">• Skill Usage	Is our school meeting our weekly IXL usage goals?
<ul style="list-style-type: none">• Skill Proficiency• Progress & Growth	Is our school achieving proficiency and mastery on IXL skills?
<ul style="list-style-type: none">• Time Spent	How are our students spending their time learning on IXL?
<ul style="list-style-type: none">• Teacher Engagement	Are our teachers actively engaging with IXL?
<ul style="list-style-type: none">• Live School	What are our students working on in IXL right now?

Let's take a closer look at which reports you can use to answer each question.

ARE OUR STUDENTS MEETING THEIR YEAR EXPECTATIONS?

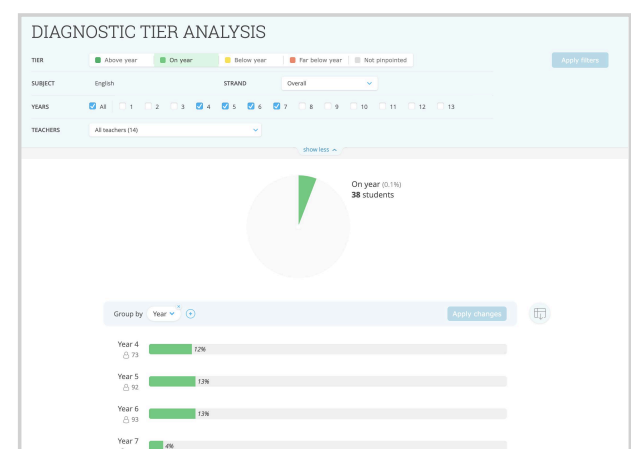
DIAGNOSTIC RESULTS:

See exactly where students' knowledge levels fall according to their latest progress on the IXL Diagnostic. Quickly identify students that are on, above or below year expectations, as well as those who are in an assessment window or have yet to pinpoint their levels. Use this report to facilitate conversations on intervention and classroom placement, or to remind teachers to keep students' knowledge levels up to date.



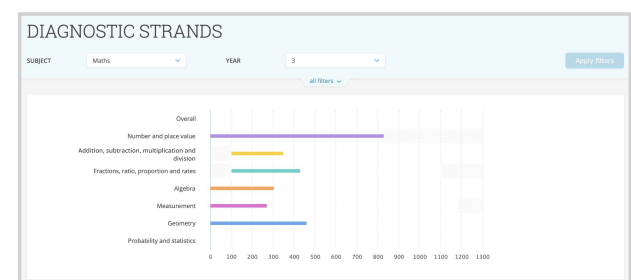
DIAGNOSTIC TIER ANALYSIS:

View the exact students within a specific performance tier (above year expectations, meeting year expectations, etc.) and their Diagnostic levels. Filter by year, subject, strand and more to identify trends in student performance that help other admins and classroom teachers boost progress where it's needed most.



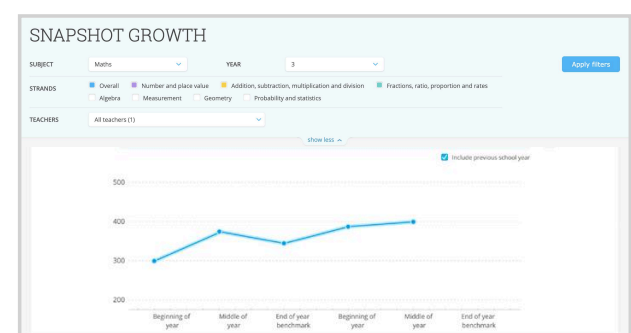
DIAGNOSTIC STRANDS:

Drill down into performance by strands! From Numbers & Operations to Writing Strategies, see average student performance for a single year level. With this data, you can help classroom teachers refine their teaching in areas that need the most improvement.



SNAPSHOT GROWTH:

This report showcases data for schools using IXL's Diagnostic in Snapshot mode*. Visualise progress for all completed Benchmarks in a single school year, with the option to view data from the previous school year as well. Use this report to celebrate school-wide wins, identify strategies that worked to boost performance and implement strategies for student cohorts that need an extra push.



*Learn more about how to use the IXL Diagnostic in Snapshot mode [here](#).

HOW ARE OUR STUDENTS PERFORMING ON ADMINISTRATOR-AUTHORED ASSESSMENTS?

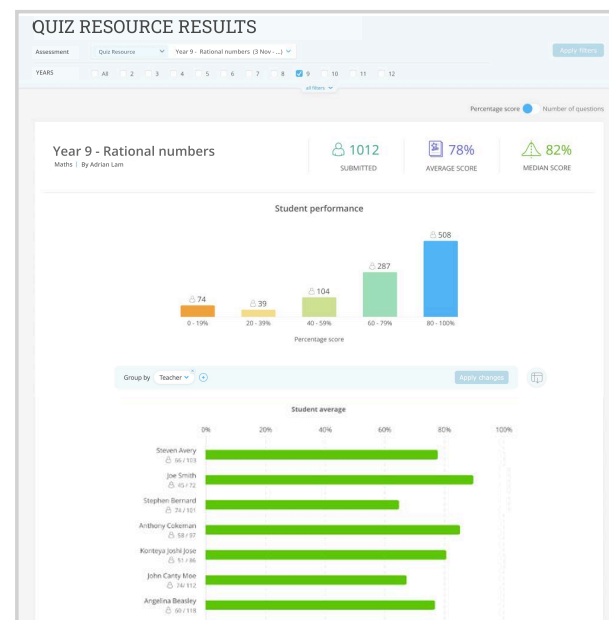
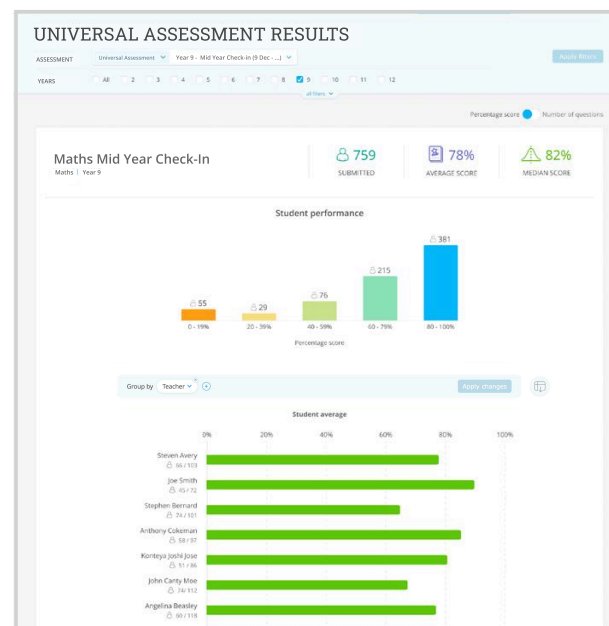
UNIVERSAL ASSESSMENT & QUIZ RESOURCE RESULTS:

These reports give you a complete summary of your students' performance on Universal Assessments and Quiz Library Resources. Quickly get an overall understanding of how your students did, then use the powerful grouping capabilities to analyse and compare performance by year, teachers and student demographics. Plus, you can even see individual students' results to plan for progress at every level.

Tip: Use the Assessment dropdown to easily toggle between these two reports and view results for either a Universal Assessment or Quiz Library Resource.

ASSESSMENT Universal Assessment ▾ Mid-Year Check-In (9 Dec - 19 Dec) ▾

ASSESSMENT Quiz Resources ▾ Unit 1 Fractions Quiz ▾



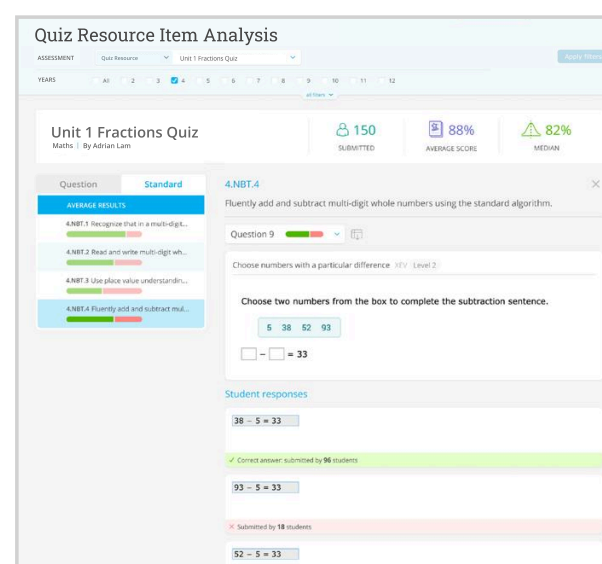
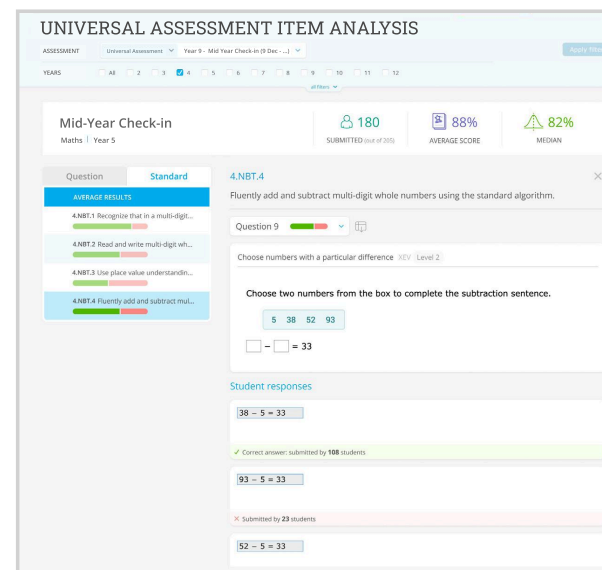


UNIVERSAL ASSESSMENT & QUIZ RESOURCE ITEM ANALYSIS:

See how your students performed on each individual question and standard from Universal Assessments and Quiz Library Resources. View the report by question to evaluate performance on key content areas, or by standard to assess readiness for important exams. Dive into results for specific years, classrooms and more to identify which groups meet your expectations and which would benefit from reteaching or additional support.

Tip: Use the Assessment dropdown to easily toggle between these two reports and view results for either a Universal Assessment or Quiz Library Resource.

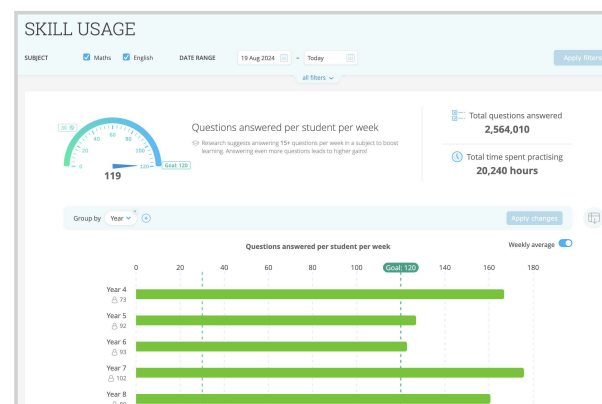
ASSESSMENT	Universal Assessment	Mid-Year Check-In (9 Dec -19 Dec)
ASSESSMENT	Quiz Resources	Unit 1 Fractions Quiz



IS OUR SCHOOL MEETING OUR WEEKLY IXL USAGE GOALS?

SKILL USAGE:

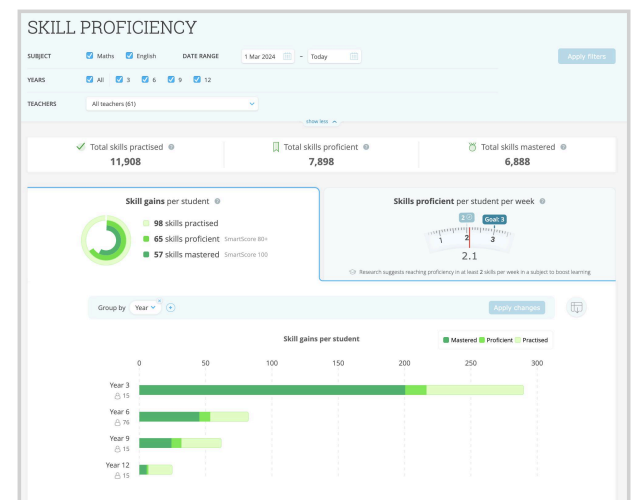
[Research](#) shows that answering at least 15 questions per week in a subject on IXL has a positive impact on students' test performance. This report helps you track whether your students are meeting that goal of regular usage, with data on how many questions students have answered and how much time they've spent practising.



IS OUR SCHOOL ACHIEVING PROFICIENCY AND MASTERY ON IXL SKILLS?

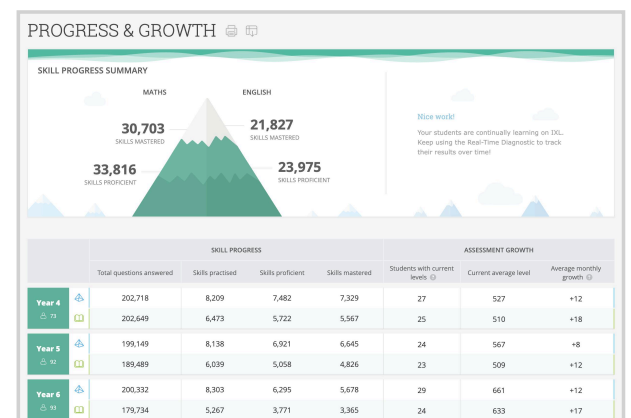
SKILL PROFICIENCY:

[Research](#) shows that striving for proficiency (a SmartScore of 80+) and mastery (a SmartScore of 100) leads to a deeper understanding of concepts and accelerated growth on assessments. The Skill Proficiency report helps you understand whether your school is using IXL for this type of purposeful practice.



PROGRESS & GROWTH:

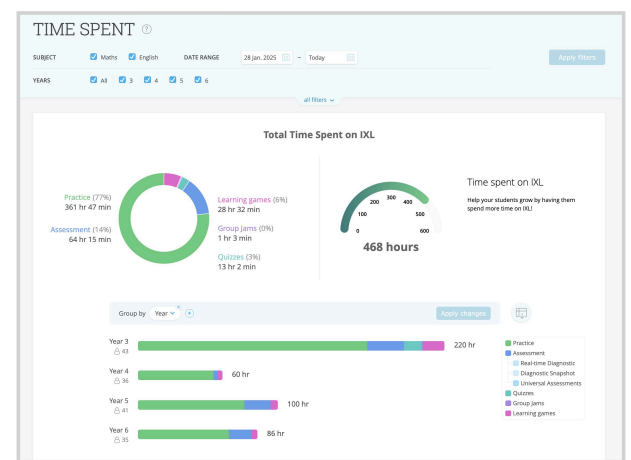
This report gives a more detailed look at skill progress, broken down by year, alongside progress on the IXL Diagnostic throughout the year. See the total number of skills students in each year have mastered, reached proficiency in or practised, as well as their average diagnostic levels. Use this report to ensure students are engaging in purposeful practice on IXL and meeting school-wide goals.



HOW ARE OUR STUDENTS SPENDING THEIR TIME LEARNING ON IXL?

TIME SPENT:

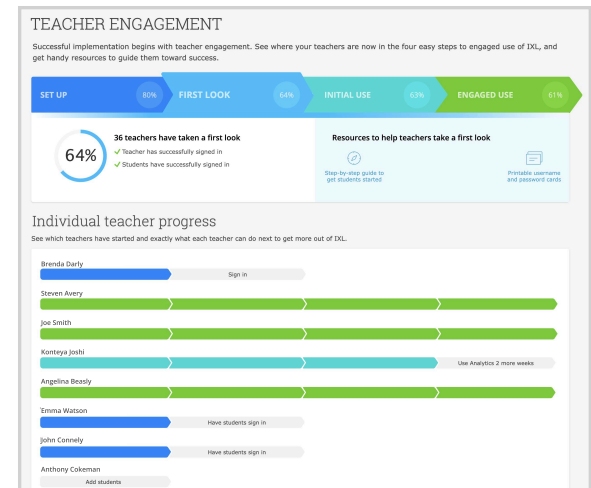
Get more insight than ever into how students are engaging with IXL's robust suite of resources. See how much time students spend on assessments, Quizzes, Group Jams, learning games and IXL skills—all in one report. Use this detailed breakdown to further tailor your IXL implementation to fit your unique needs and goals.



ARE OUR TEACHERS ACTIVELY ENGAGING WITH IXL?

TEACHER ENGAGEMENT:

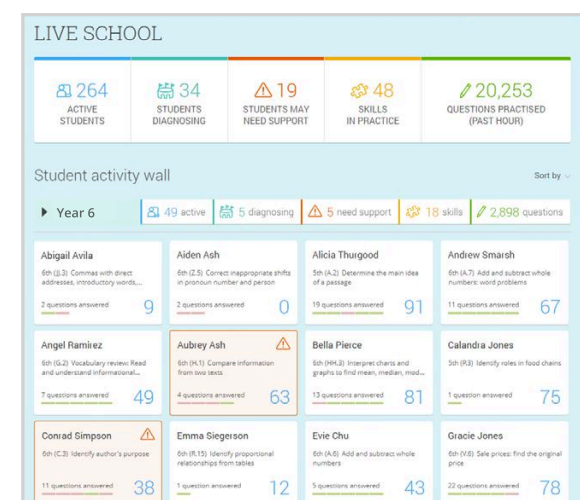
This report gives you a step-by-step look at where each teacher is in their implementation process. For each step, you'll also see resources you can share to get teachers to level up their IXL usage. Use this report to facilitate more consistent and effective use of IXL's curriculum and data insights across all classrooms.



WHAT ARE STUDENTS WORKING ON IN IXL RIGHT NOW?

LIVE SCHOOL:

This report allows you to see the exact skills and questions students are working on in real time. Easily identify students who are struggling and send support or encouragement with Live Message.



Want to learn more about IXL School Analytics?
[Visit the Admin Resource Centre](#)